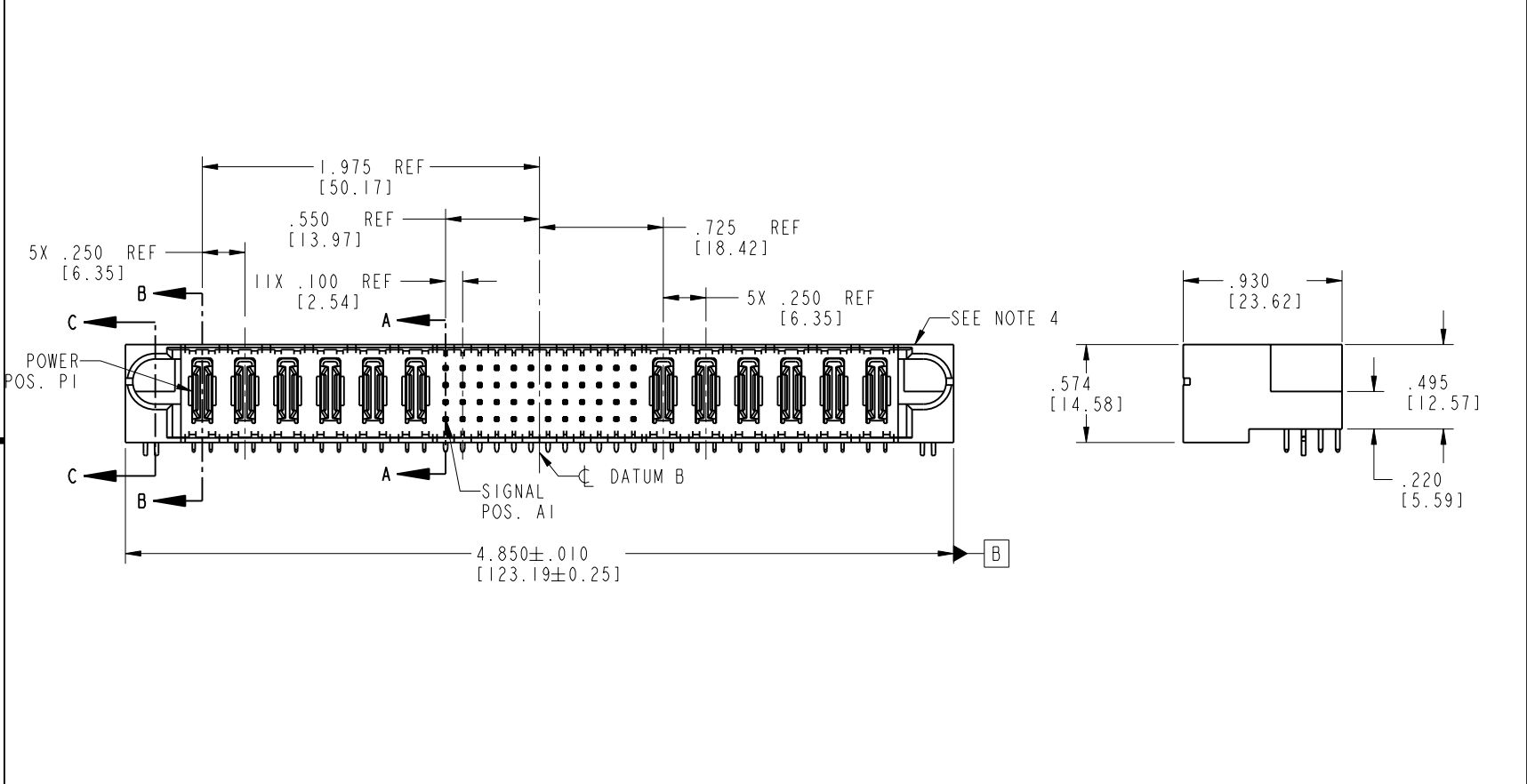
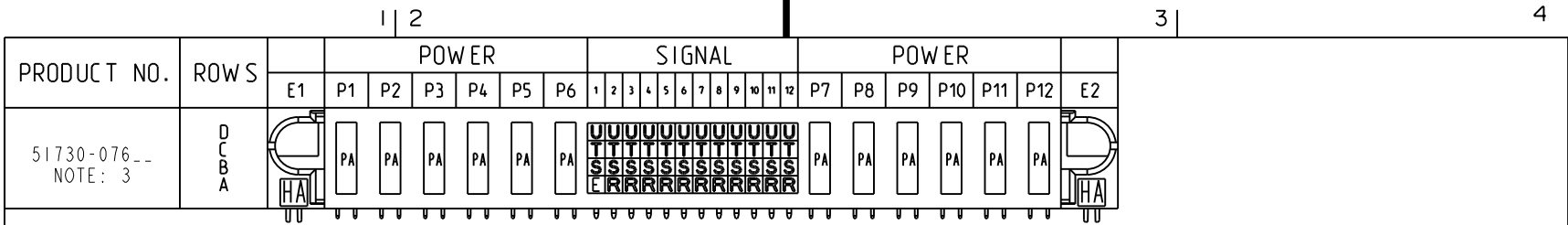


Tous droits strictement réservés. Reproduction ou communication o des liens interdite sous quelque forme que ce soit sans autorisation écrite du propriétaire. Propriété de c FCI. Droits de reproduction FCI.

All rights strictly reserved. Reproduction or issue to third parties in any form, whenever is not permitted without written authority from the proprietor. Property of FCI. Copyright FCI.



CODE	DIM "M"	MATING LENGTH	CONTACT TYPE
PA	N/A	[N/A]	POWER
HA	N/A	[N/A]	HOLD-DOWN
U	.270	[6.86]	SIGNAL
T	.270	[6.86]	SIGNAL
S	.270	[6.86]	SIGNAL
R	.270	[6.86]	SIGNAL
E	.220	[5.59]	SIGNAL

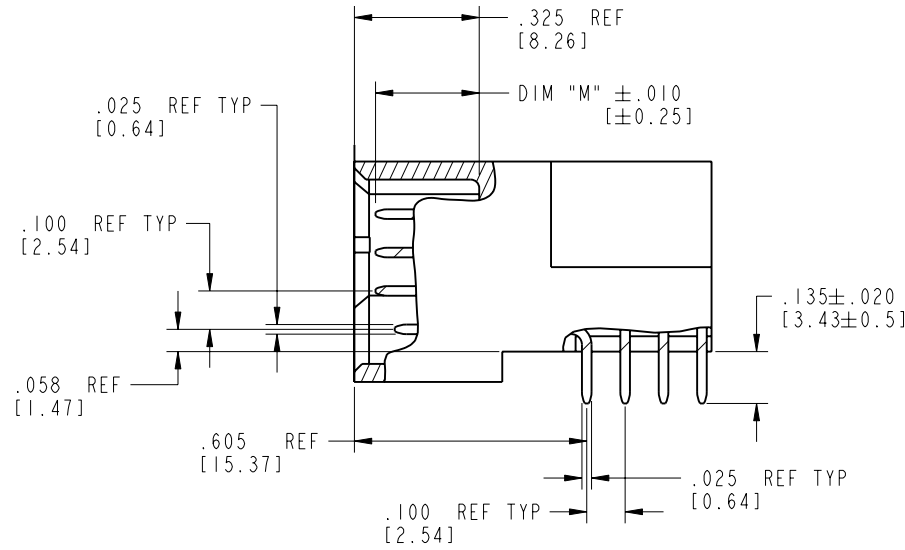
mat'l code				tolerances unless otherwise specified		CUSTOMER	
SEE NOTE 2						COPY	
ltr	ecn no.	dr	date	linear	.XX±.01/0.XX±0.3	projection	
A	V03-0511	TAB	05/07/03		.XXX±.005/0.XX±0.13	INCH/MM	
B	V03-0595	TAB	05/23/03	angles	.XXX±.0020/0.XXX±0.051	scale	
C	V03-0646	TAB	06/09/03		0°±2°	1:1	
D	DG05-0501	GuoJM	11/24/05	dr	T. BRUNGARD 05/07/03	product family	
				engr	M. MOSTOLLER 05/07/03	PwrBlade	
				chr	M. MOSTOLLER 05/07/03	code	
				appd	M. MOSTOLLER 05/07/03	213	
sheet index	revision sheet	D D	D D	D D	D D	sheet	
1	2	3	4			1 of 4	

product family		code	
PwrBlade		213	
size	dwg no	sheet	
A	51730-076	1 of 4	

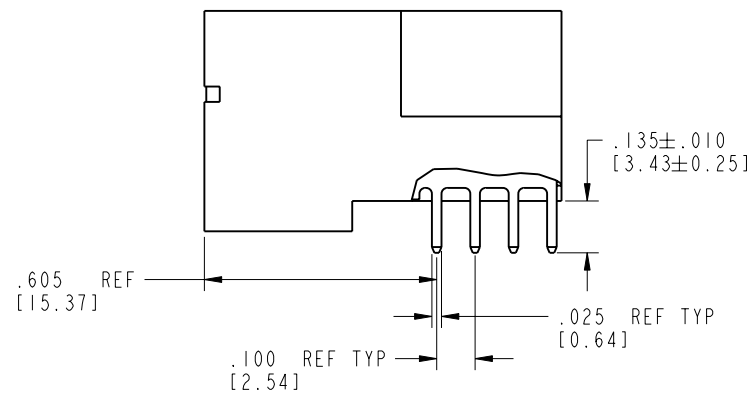
Tous droits strictement réservés. Reproduction ou communication o des liers interdite sous quelque forme que ce soit sans autorisation écrite du propriétaire. Propriété de c FCI. Droits de reproduction FCI.

All rights strictly reserved. Reproduction or issue to third parties in any form, whatever is not permitted without written authority from the proprietor. Property of FCI. Copyright FCI.

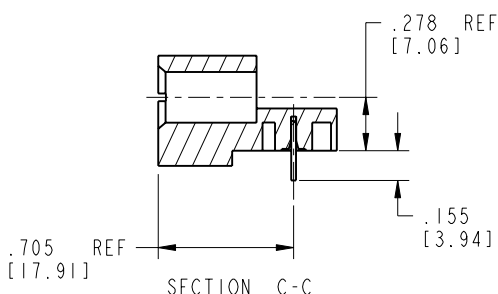
PRODUCT NUMBER  
51730-076--  
NOTE: 3



BROKEN-OUT SECTION A-A  
SCALE 2:1



BROKEN-OUT SECTION B-B  
SCALE 2:1



SECTION C-C

mat'l code		SEE NOTE 2		tolerances unless otherwise specified		CUSTOMER		 www.fciconnect.com	
lfr	ecn no.	dr	date	linear	.XX±.01/0.X±0.3	COPY			
D				projection	.XXX±.005/0.XX±0.13			title 6P + 48S + 6P	
				angles	.XXX±.0020/0.XXX±0.051			RIGHT ANGLE SOLDER HEADER	
				dr	T. BRUNGARD 05/07/03	INCH/MM		product family PwrBlade	
				engr	M. MOSTOLLER 05/07/03	scale		code 213	
				chr	M. MOSTOLLER 05/07/03	1:1		sheet 2 of 4	
				appd	M. MOSTOLLER 05/07/03			size 51730-076	
sheet index	revision sheet							2	

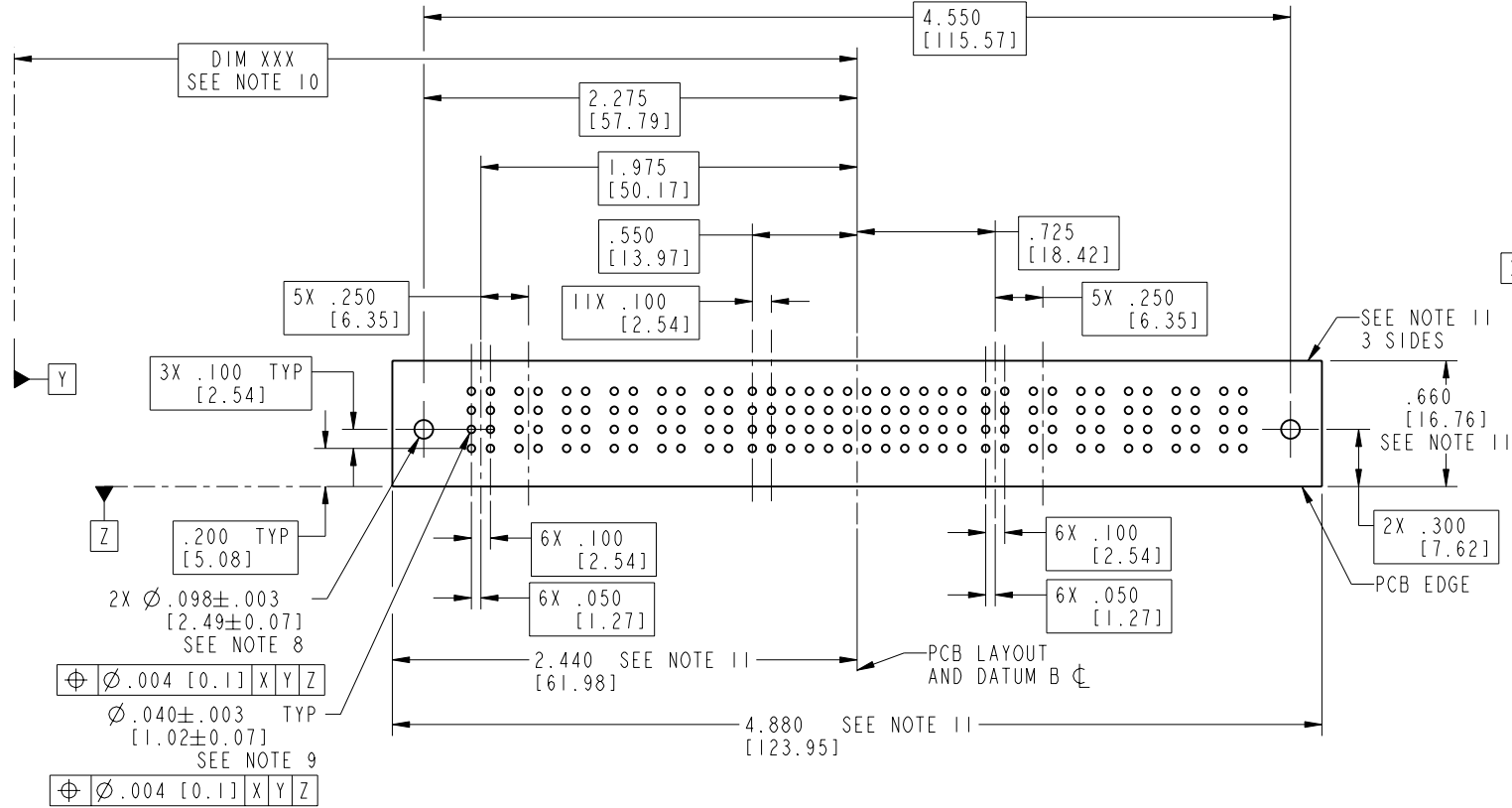
cage code 22526

Pro/E

Tous droits strictement réservés. Reproduction ou communication o des liers interdite sous quelque forme que ce soit sans autorisation écrite du propriétaire. Propriété de c FCI. Droits de reproduction FCI.

All rights strictly reserved. Reproduction or issue to third parties in any form, whenever is not permitted without written authority from the proprietor. Property of FCI. Copyright FCI.

PRODUCT NUMBER  
51730-076--  
NOTE: 3



RECOMMENDED PCB LAYOUT

mat'l code				SEE NOTE 2		tolerances unless otherwise specified		CUSTOMER		 www.fciconnect.com	
lfr	ecn no.	dr	date	linear	.XX±.01/0.X±0.3		COPY		title		
D					.XXX±.005/0.XX±0.13		projection		6P + 48S + 6P		
					.XXX±.0020/0.XXX±0.051				RIGHT ANGLE SOLDER HEADER		
				angles	0° ± 2°		INCH/MM		product family		code
				dr	T. BRUNGARD	05/07/03	scale		PwrBlade		213
				enrg	M. MOSTOLLER	05/07/03	1:1		size		sheet
				chr	M. MOSTOLLER	05/07/03	A		51730-076		3 of 4
				appd	M. MOSTOLLER	05/07/03					
sheet index	revision sheet										

cage code 22526

Pro/E

PDM: Rev:D

STATUS: Released

Printed: Dec 20, 2010

Tous droits strictement réservés. Reproduction ou communication o des liers interdite sous quelque forme que ce soit sans autorisation écrite du propriétaire. Propriete de c FCI. Droits de reproduction FCI.

**FCI**

All rights strictly reserved. Reproduction or issue to third parties in any form, whatever is not permitted without written authority from the proprietor. Property of FCI. Copyright FCI.

1 | 2

3 |

4

**PRODUCT NUMBER**

51730-076 --  
NOTE: 3

**NOTES:**

1. DIMENSIONS AND TOLERANCES ARE IN ACCORDANCE WITH ASME Y14.5M, 1994 UNLESS OTHERWISE SPECIFIED.

**CONNECTOR NOTES:**

2. HOUSING MATERIAL: UL 94 V-0 GLASS FILLED HIGH-TEMP THERMOPLASTIC  
POWER CONTACT MATERIAL: COPPER ALLOY  
SIGNAL PIN MATERIAL: COPPER ALLOY

3. PLATING:  
51730-076 Singal Pin:30u"/0.76um Au OVER 50u"/1.27um Ni ON THE CONTACT AREA,  
AND 100u"/2.54um SnPb PLATING OVER 50u"/1.27um Ni ON THE TERMINATION SECTION.  
Power Pin:30u"/0.76um Au OVER 50u"/1.27um Ni ON THE CONTACT AREA,  
AND 100u"/2.54um SnPb PLATING OVER 50u"/1.27um Ni ON THE TERMINATION SECTION.  
  
51730-076LF Singal Pin:30u"/0.76um Au OVER 50u"/1.27um Ni ON THE CONTACT AREA,  
AND 78u"/2.00um Sn PLATING OVER 50u"/1.27um Ni ON THE TERMINATION SECTION.  
Power Pin:30u"/0.76um Au OVER 50u"/1.27um Ni ON THE CONTACT AREA,  
AND 78u"/2.00um Sn PLATING OVER 50u"/1.27um Ni ON THE TERMINATION SECTION.

PART NUMBER 51730-076LF MEETS EUROPEAN UNION DIRECTIVE AND OTHER COUNTRY REGULATIONS AS DESCRIBED IN GS-22-008.

THE HOUSING WILL WITHSTAND EXPOSURE TO 260° PEAK TEMPERATURE FOR 10 SECONDS IN A WAVE SOLDER APPLICATION WITH A CIRCUIT BOARD.

4. MANUFACTURER'S NAME, P/N, AND DATE CODE TO APPEAR ON THIS SURFACE.

5. PRODUCT SPECIFICATION GS-12-149.  
APPLICATION SPECIFICATION BUS-20-067.

6. PACKAGED IN TRAYS.

**PCB NOTES:**


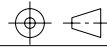
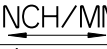
7. ALL HOLE DIAMETERS ARE FINISHED HOLE SIZE.

8. MOUNTING HOLES, WHERE APPLICABLE, ARE UNPLATED.

9.  $\varnothing .0453 \pm .0010$  [1.151 ± 0.025] DRILLED HOLES PLATED WITH .0003 [0.008] MIN SnPb OVER .001 [0.03] TO .003 [0.08] Cu PLATING TO ACHIEVE  $\varnothing .040 \pm .003$  [1.02 ± .07] HOLE.

10. "DIM XXX" TO BE DETERMINED BY THE CUSTOMER.

11. CONNECTOR KEEP-OUT ZONE.

mat'l code				SEE NOTE 2		tolerances unless otherwise specified		CUSTOMER		 www.fciconnect.com	
ltr	ecn no.	dr	date	linear	.XX±.01/0.X±0.3		COPY		 RIGHT ANGLE SOLDER HEADER		
D					.XXX±.005/0.XX±0.13		projection				
					.XXX±.0020/0.XXX±0.051		 INCH/MM				
				angles	0° ± 2°		scale		product family		code
				dr	T. BRUNGARD	05/07/03	1:1		PwrBlade		213
				engr	M. MOSTOLLER	05/07/03			size		sheet
				chr	M. MOSTOLLER	05/07/03			A		4 of 4
				appd	M. MOSTOLLER	05/07/03			51730-076		
sheet index		revision sheet									

1 | 2

Pro/E

3 |

cage code 22526

4