

## 1600W 1U Industrial Power Supplies

### Features

- ◆ 1U High
- ◆ Internal ORing FETs & Current Share
- ◆ High Efficiency
- ◆ I<sup>2</sup>C, PMBus Communication Option



### Key Market Segments & Applications



Specifications		RFE1600
Model		RFE1600
Input Voltage Range	VAC	85 - 265VAC, 47 - 63Hz. See model selector for power derating(2)
Input Current (Max) 115/230VAC	A	11.6 / 8.1A
Inrush Current	A	<35A
Power Factor Correction	-	Meets EN61000-3-2, PF > 0.98 at full load
Temperature Coefficient	%/°C	<0.02%/°C
Overcurrent Protection	%	105 - 115% (Programmable)
Overvoltage Protection	%	110% (Tracking). Cycle AC to reset or utilize Remote On/Off(1)
Overtemperature Protection	-	Shutdown with automatic reset. Warning signal provided(1)
Hold up time	ms	>10ms, 100/230VAC Input, 80% loading
Leakage Current	mA	< 0.75 / 1.5mA, 100 / 230VAC, 60Hz
Remote Sense Compensation	-	12V: 0.25V/wire; 24V: 0.5/wire; 32V: 0.75V/wire; 48V: 1V/wire
Indicators	-	AC OK: Green LED, DC OK / Fail: Green / Red LED
Remote On/Off	-	Yes, inhibit & enable
Parallel Operation	-	Yes, single wire current share, 5% accuracy of max current, up to 10 units
AC Fail Signal	-	Open Collector, ON when AC is within 85 - 270VAC
DC Good Signal	-	Open Collector, ON when output is above 85 to 95% of setpoint (tracking)
Remote Adjust	-	By either external 0 - 5V signal or 1k potentiometer(1)
I <sup>2</sup> C Interface	-	Isolated from output, Add suffix /S, PMBus compatible(1)
Auxiliary Output	-	11.2 - 12.5V, 0.5A, 240mV ripple and noise
Operating Temperature	°C	-10 to +70°C, derate 2%/°C from 50 to 60°C, 2.5%/°C from 60 to 70°C
Storage Temperature	°C	-30 to +85°C
Humidity (Non condensing)	%RH	Operating: 10 - 90%RH, Storage: 10 - 95%RH
Cooling	-	Two variable speed internal fans, airflow exits across input/output connector
Withstand Voltage	-	Input to Output 3kVAC, Input to Output 2kVAC, Output to Ground: RFE1600-12, -24V 500VAC, RFE1600-48 2150VDC
Isolation Resistance	MΩ	>100MΩ at 25°C & 70%RH, Output to Ground 500VDC
Vibration (Basic transportation)	-	MIL-810F, method 514.5
Shock (Basic transportation)	G	30G
Safety Agency Certifications	-	UL60950-1, EN60950-1 (2nd Edition), CE Mark
Conducted and Radiated EMI	-	EN55022 & FCC part 15; Conducted class B, Radiated class A
Immunity	-	IEC61000-4-2 (lv 2,3), -3 (lv 2), -4 (lv2), -5 (lv3,4), -6 (lv2), -8 (lv 4), -11
Size (W x H x D)	in	Power Supply: 3.35 x 1.61 x 12.6
Weight	g	1550
Warranty	yrs	Three

#### Notes

- (1) See installation manual for detailed specifications & test methods
- (2) Derate linearly 1%/V from 100VAC to 85VAC input

## Model Selector

Model	Output Voltage	Adjust. Range(1)	Max Current (Vin>170VAC)	Max Power (Vin>170VAC)	Max Current(2) (100<Vin<170VAC)	Max Power(2) (100<Vin<170VAC)
RFE1600-12	12V	9.6 - 13.2V	133A	1596W	100A	1200W
RFE1600-12/S	12V	9.6 - 13.2V	133A	1596W	100A	1200W
RFE1600-24	24V	19.2 - 29V	67A	1608W	50A	1200W
RFE1600-24/S	24V	19.2 - 29V	67A	1608W	50A	1200W
RFE1600-32	32V	25.6 - 38.4V	47A	1504W	37.5A	1200W
RFE1600-32/S	32V	25.6 - 38.4V	47A	1504W	37.5A	1200W
RFE1600-48	48V	38.4 - 58V	33A	1584W	25A	1200W
RFE1600-48/S	48V	38.4 - 58V	33A	1584W	25A	1200W

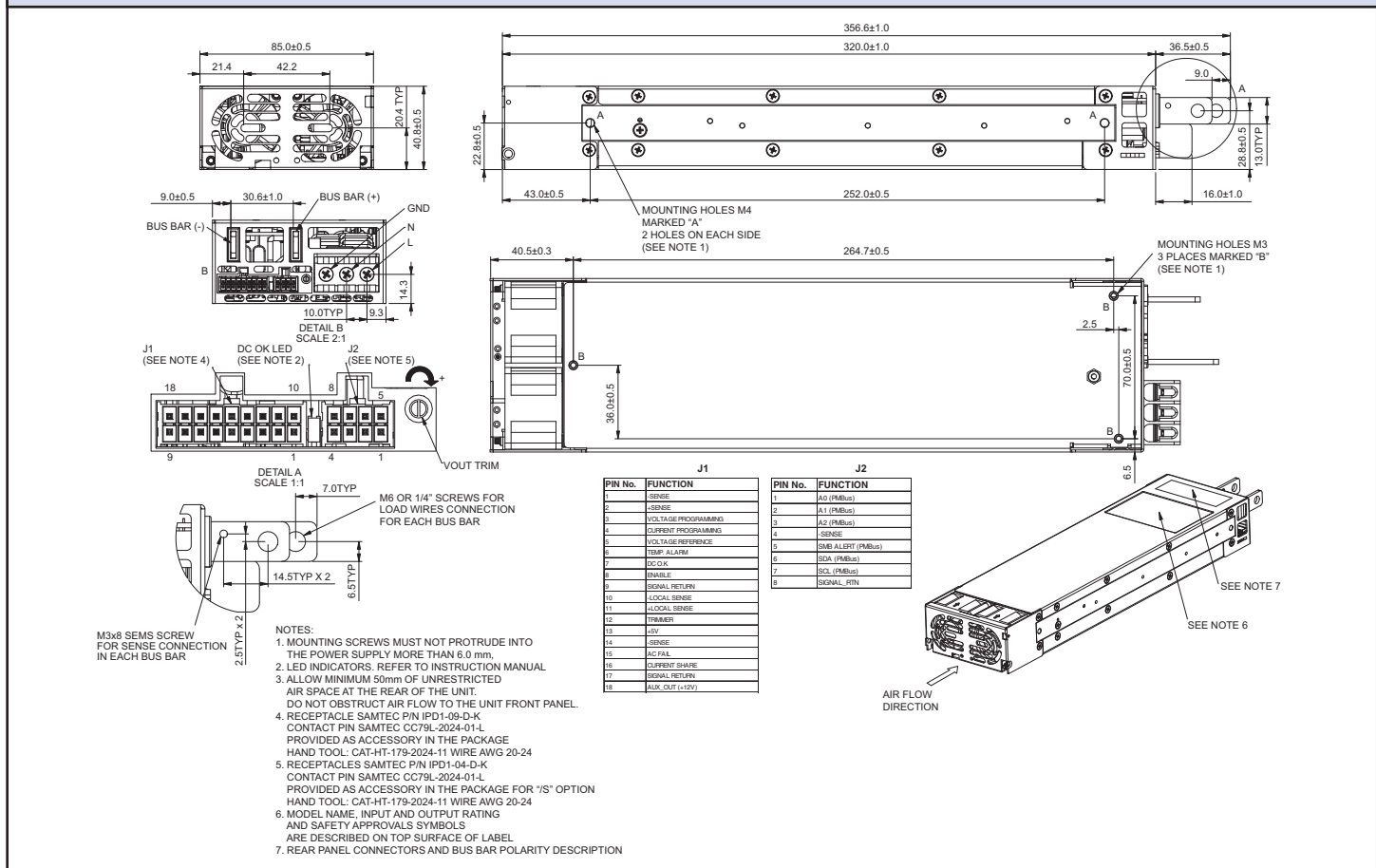
  

Model	Load Reg	Line Reg	Ripple & Noise	Effic. (3)	TC
RFE1600-12	60mV	30mV	240mV	87 / 90%	-
RFE1600-12/S	60mV	30mV	240mV	87 / 90%	Yes
RFE1600-24	120mV	60mV	240mV	88 / 90%	-
RFE1600-24/S	120mV	60mV	240mV	88 / 90%	Yes
RFE1600-32	160mV	80mV	320mV	88 / 90%	-
RFE1600-32/S	160mV	80mV	320mV	88 / 90%	Yes
RFE1600-48	240mV	120mV	480mV	89 / 92%	-
RFE1600-48/S	240mV	120mV	480mV	89 / 92%	Yes

Notes:

(3) At 75% load, 115 / 230VAC input

## Outline Drawing



## Other Related Products

FPS1000	1U 1000W (3 per rack)
HWS1500	1500W Limited lifetime warranty
HFE1600	1U 1600W (5 per rack)
HFE2500	1U 2500W (4 per rack)

For Additional Information, please visit [us.tdk-lambda.com/lp/products/rfe-series.htm](http://us.tdk-lambda.com/lp/products/rfe-series.htm)

