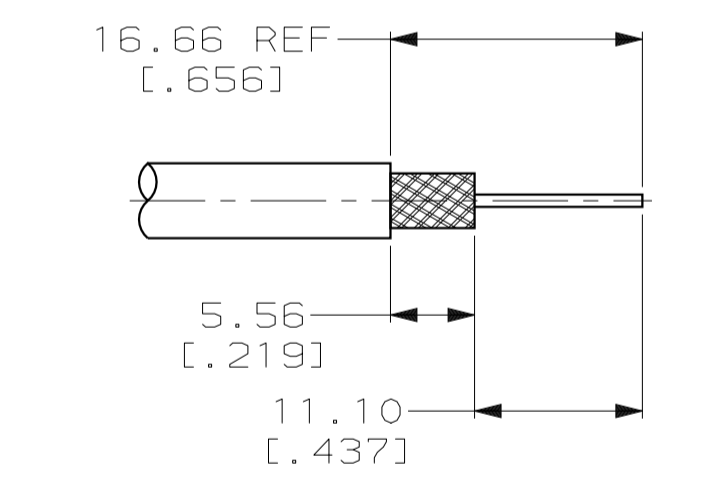
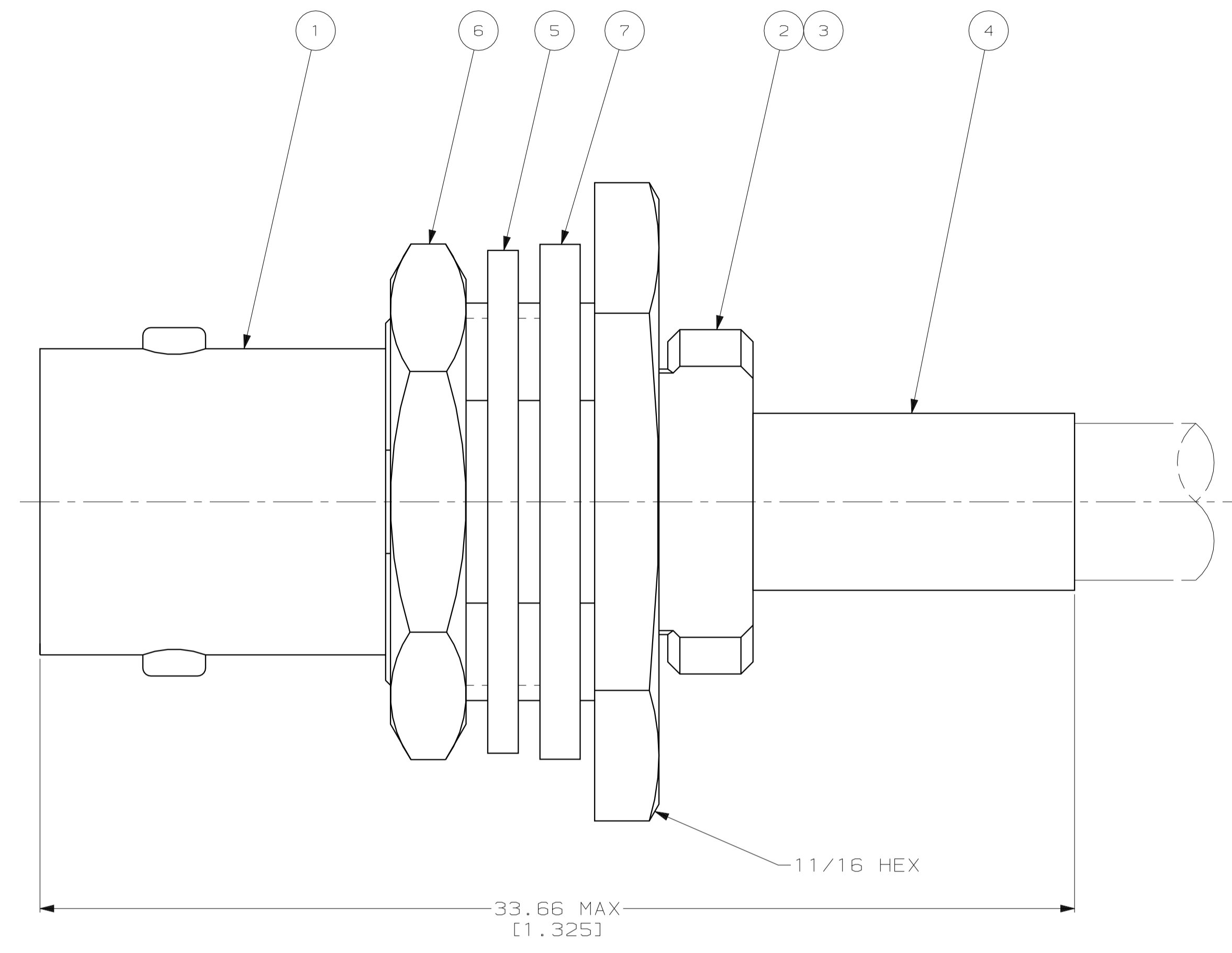
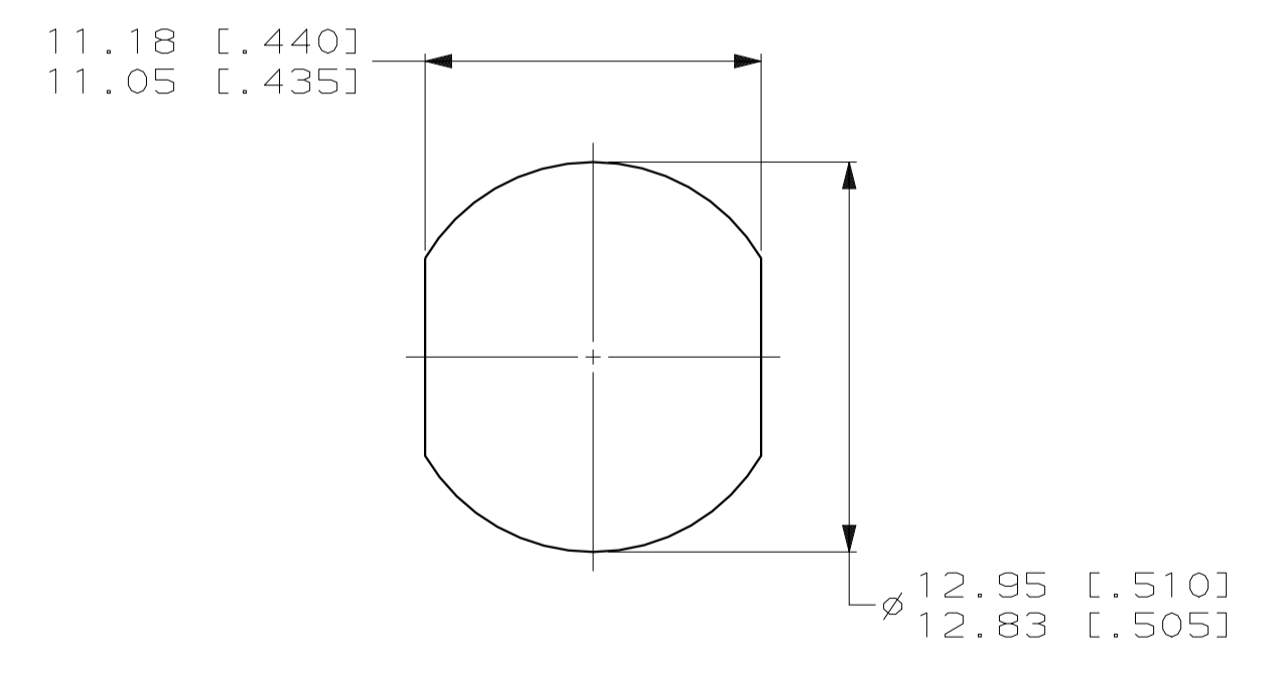


1. USE INSTRUCTION SHEET 1799-3
2. MAXIMUM PANEL THICKNESS = 3.18 [1.25]



RECOMMENDED STRIP LENGTH
SCALE 2:1



RECOMMENDED PANEL CUTOUT
SCALE 4:1

OBSOLETE	-	-	-	-	-	-	-	-	-	-	7-329456-2						
OBSOLETE	-	-	-	-	-	-	-	-	-	-	7-329456-1						
OBSOLETE	-	-	-	-	-	-	-	-	-	-	2-329456-3						
OBSOLETE	RG-55/U, 55A/U, 55B/U, 223/U	69140-2	329633	329631	329632	329099	50793-1	2-329106-1	329800	2-329456-2							
	RG-142/U, 142A/U, 142B/U	69331-1															
	RG-58/U, 58A/U, 58B/U, 58C/U	69140-1	329633	329631	329632	328663	50793-1	2-329106-1	329800	2-329456-1							
SUPERSEDED BY 2-329456-1	-	-	-	-	-	-	-	-	-	329456							
	CABLE	CRIMP TOOL	⑦	GASKET	⑥	JAM NUT	⑤	LOCK WASHER	④	FERRULE	③	CRIMP END ASSEMBLY	②	GASKET	①	JACK ASSEMBLY, BULKHEAD	PART NUMBER
				QTY=1		QTY=1		QTY=1		QTY=1		QTY=1		QTY=1		QTY=1	

THIS DRAWING IS A CONTROLLED DOCUMENT.

DIMENSIONS: mm (INCHES)	TOLERANCES UNLESS OTHERWISE SPECIFIED:	DWN MICHAEL E. COWHER 15FEB96	AMP Incorporated Harrisburg, PA 17105-3608
0 PLC ±.01	1 PLC ±.02	CHK FRANK P. MORANA 15FEB96	NAME FRANK P. MORANA
2 PLC ±.041 (.016)	3 PLC ±.08	APVD FRANK P. MORANA	PRODUCT SPEC
4 PLC ±.16	ANGLES ±.5		APPLICATION SPEC
MATERIAL	FINISH	WEIGHT	SIZE A1 00779
			CAGE CODE C-329456
			DRAWING NO C-329456
			SCALE 8:1
			SHEET 1 OF 1
			REV R