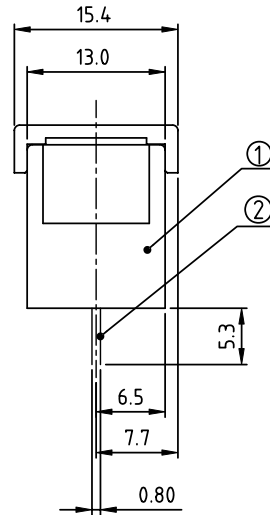
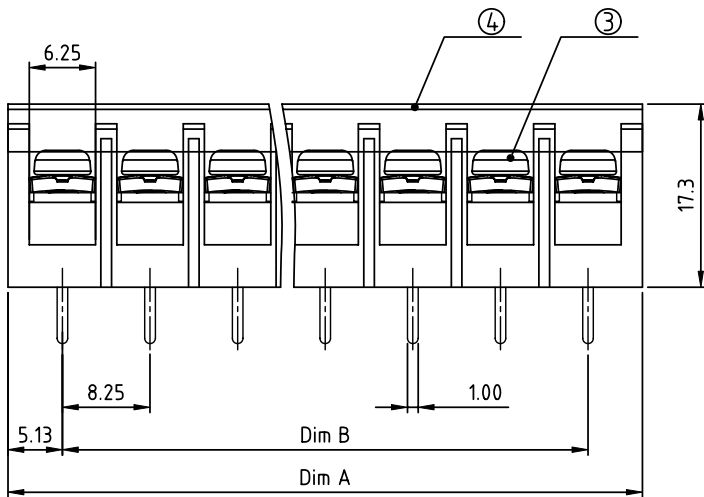
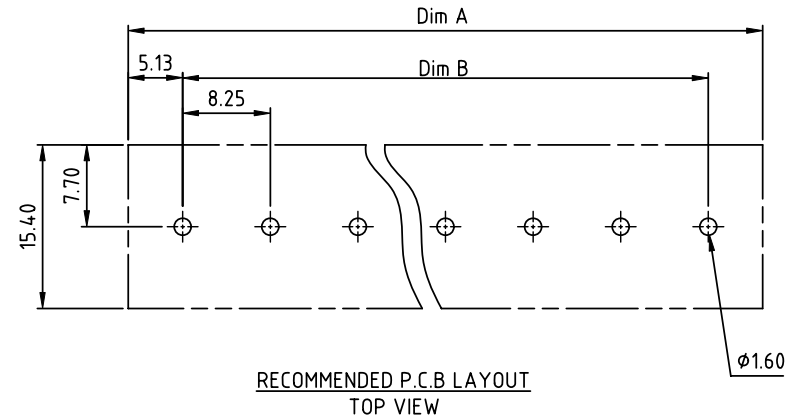
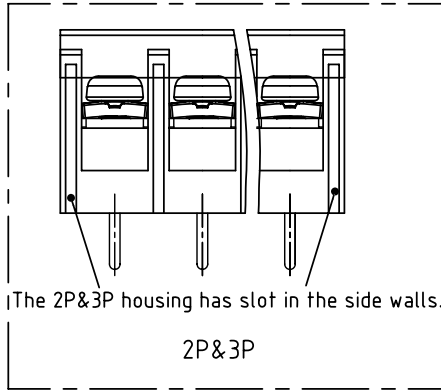
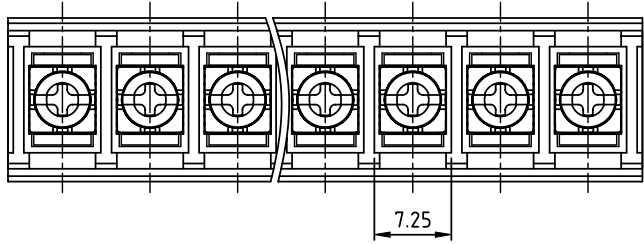


PRODUCT NUMBER	PITCH
YK402xx2x0J0G	8.25 mm



- MATERIALS ELECTRICAL
- RATED VOLTAGE & CURRENT: 300 V, 20 A
- WITHSTAND VOLTAGE: AC 2000 V/Min
- INSULATION RESISTANCE: 1000 MΩ OR MORE AT DC 500 V
- OPERATING TEMPERATURE RANG: -40 °C ~ +115 °C
- SCREW TORQUE VALUE: 7 Lb-In.
- WIRE RANGE: 22 - 12 AWG
- 1) HOUSING: Thermoplastic , UL 94 V-0 BLACK
- 2) TERMINAL: BRASS, 0.8t
- 3) TERMINAL SCREWS: STEEL, M3
- 4) COVER MATERIAL: PC
- APPROVAL: us

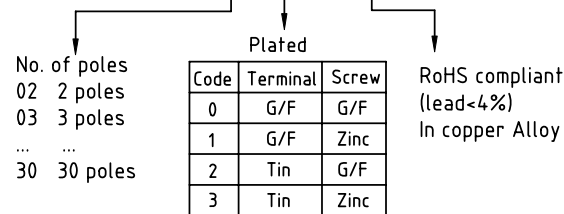
DIMENSION

Dim A	N×8.25±2.0
Dim B	(N-1)×8.25

N=Number of poles

Poles	Tolerance
2p-4p	±0.30
5p-8p	±0.40
9p-16p	±0.50
17p-23p	±0.60
24p-30p	±0.80

PART NO.: YK 402xx 2 x 0 JOG



mat'l. code		surface ASME Y14.5	tolerance ASME Y14.5	projection 	product family TERMINAL BLOCK
ltr	ecn no	dr	date	tolerances unless otherwise specified	title TERMINAL BLOCK
				angles X°±1'	BARRIER TYPE, WITH COVER
				scale MM	dwg no YK402xx2x0J0G
				dr EVAN LU 061014	sheet 1 of 1 size A4
				enr EVAN LU 061014	type CUSTOMER Drawing
				chr HANKE FENG 061014	
				appd SHI JUN 061014	
sheet index	revision	A			
	sheet	1			