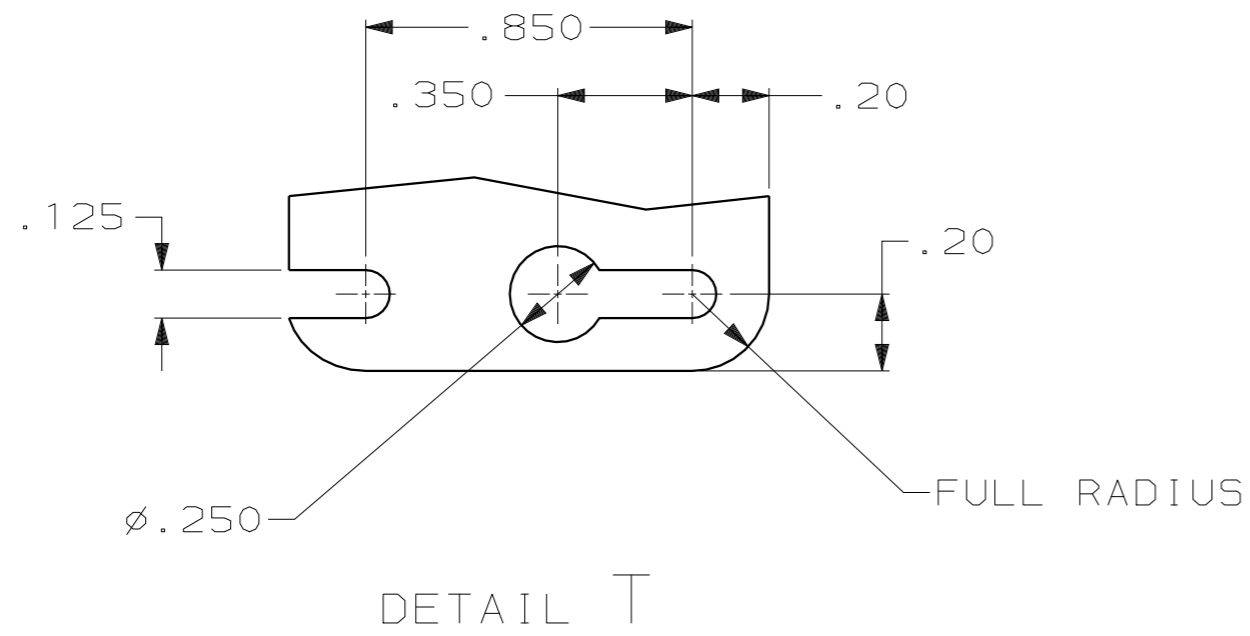
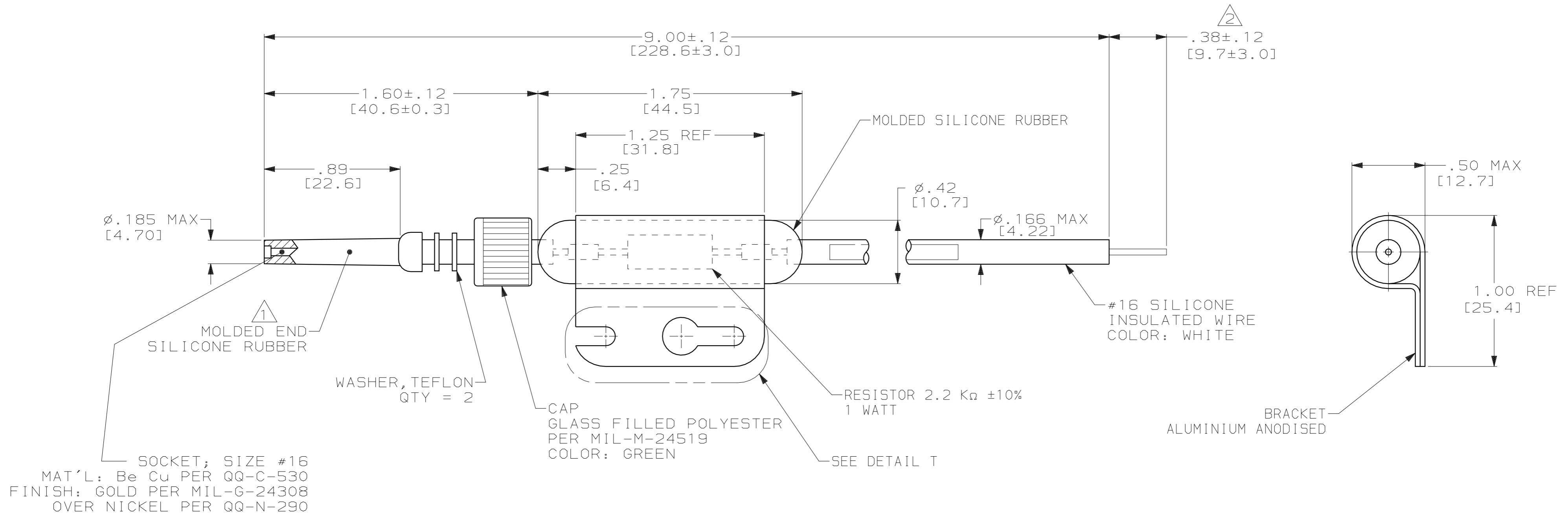


THIS DRAWING IS UNPUBLISHED. RELEASED FOR PUBLICATION
 BY AMP INCORPORATED. ALL RIGHTS RESERVED.

LOC	DIST	REVISIONS			
P	LTR	DESCRIPTION	DATE	DWN	APVD
DF	SO	G	REV PER ECO 05-03298 CT	6-3-05	CT DE

- 1 TO MATE WITH AMP LGH-1/2L RECEPTACLE WITH .89 [22.6] BARREL DEPTH.
- 2 PIG TAIL IS SOLDER DIPPED.
- 3. MARKED PER MIL-STD-130.



859095

859095-1
PART NO.

THIS DRAWING IS A CONTROLLED DOCUMENT FOR AMP INCORPORATED. IT IS SUBJECT TO CHANGE AND THE CONTROLLING ENGINEERING ORGANIZATION SHOULD BE CONTACTED FOR THE LATEST REVISION.		DWN C.C. THOMAS 8-31-95	AMP Incorporated Harrisburg, PA 17105-3608	
DIMENSIONS: INCHES [mm]		CHK D.EABY 10-12-95	NAME D.EABY	
TOLERANCES UNLESS OTHERWISE SPECIFIED: 0 PLC ±- 1 PLC ±- 2 PLC ±.02 [0.5] 3 PLC ±.005 [0.13] 4 PLC ±- ANGLES ±- FINISH -		APVD D.EABY 10-12-95	PRODUCT SPEC -	
MATERIAL -		APPLICATION SPEC -	DRAWING NO A2 00779	
		WEIGHT -	CAGE CODE C-859095	
		CUSTOMER DRAWING		SCALE 2:1 SHEET 1 OF 1 REV G