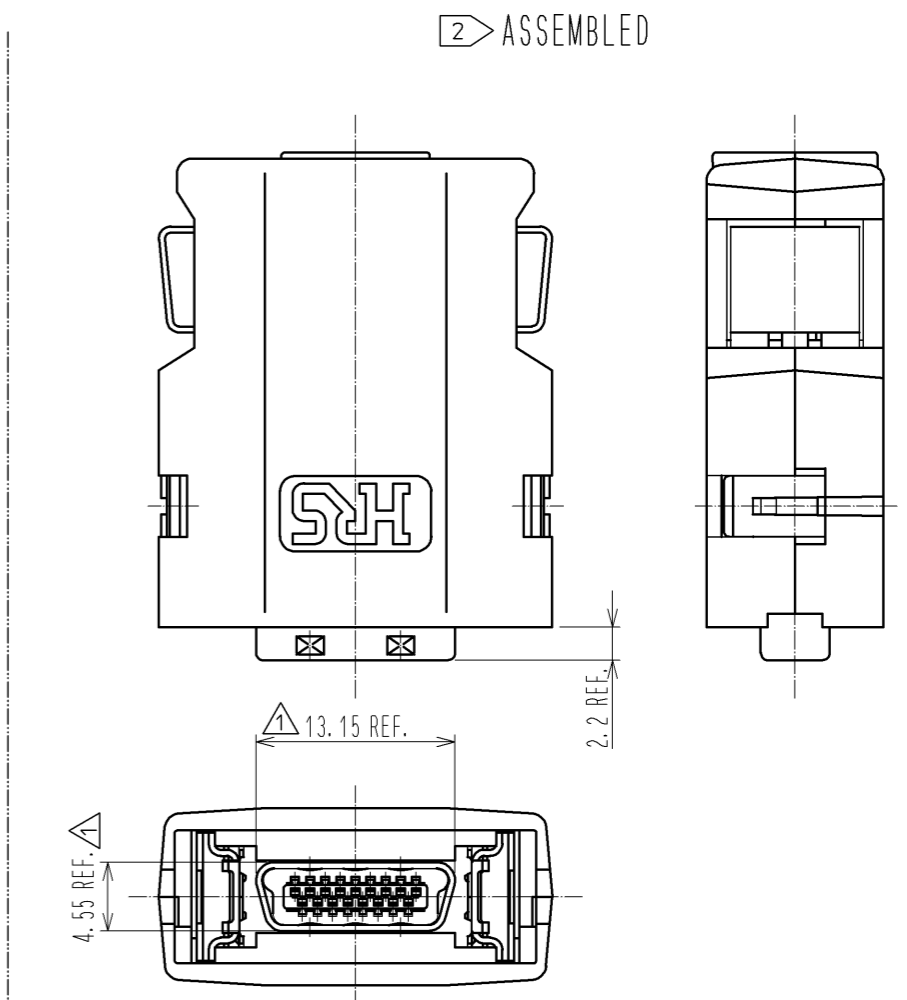
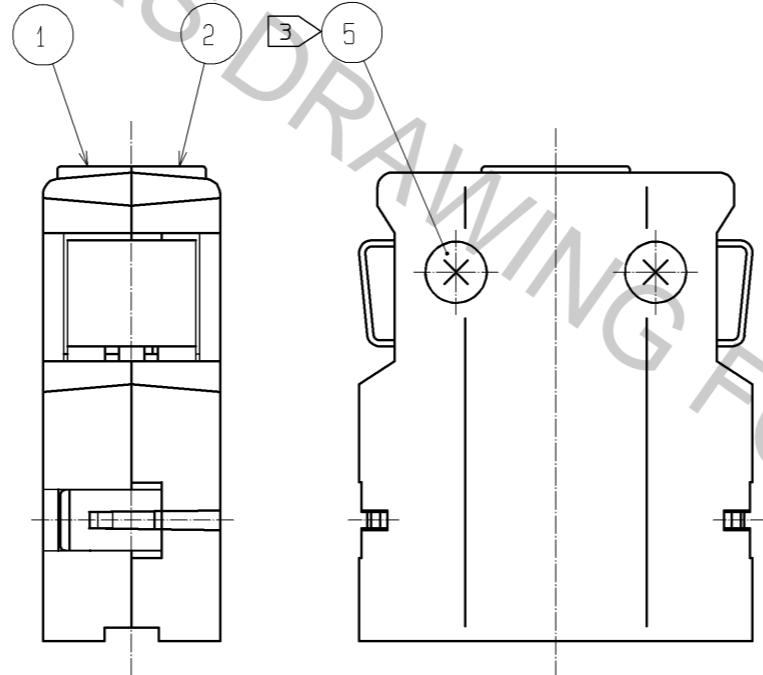
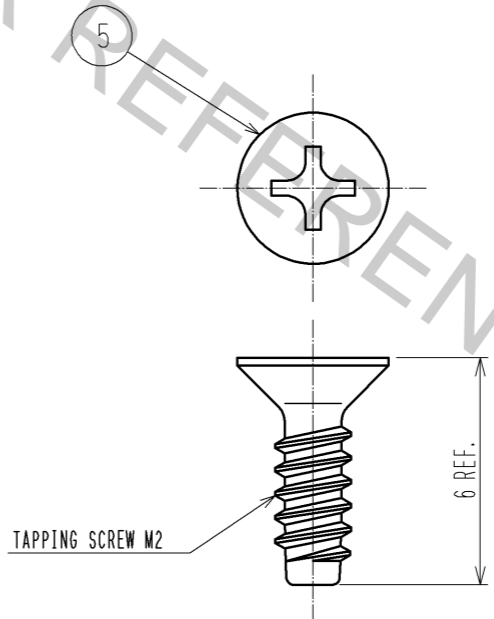
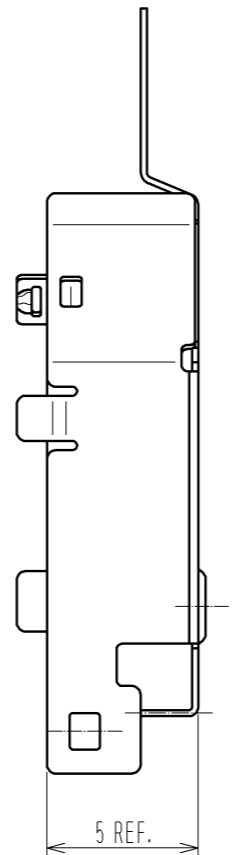
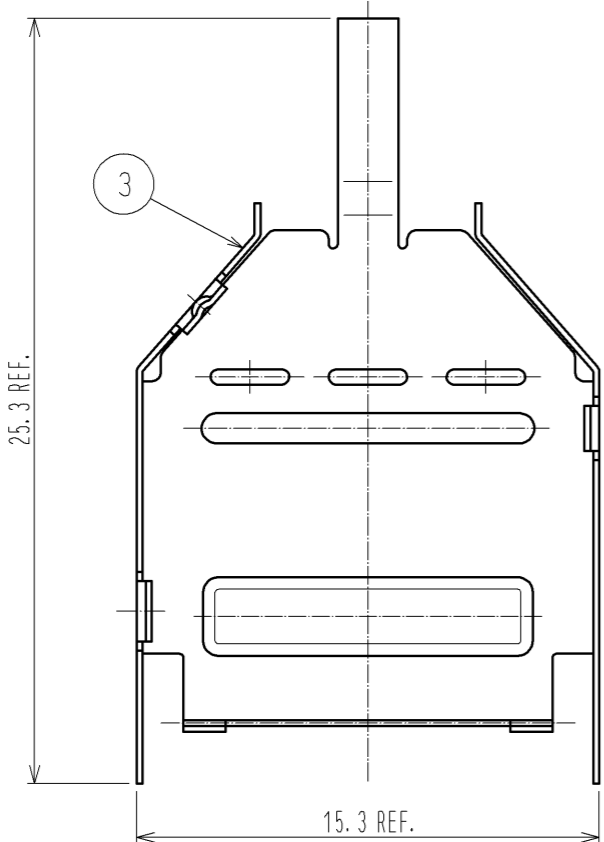
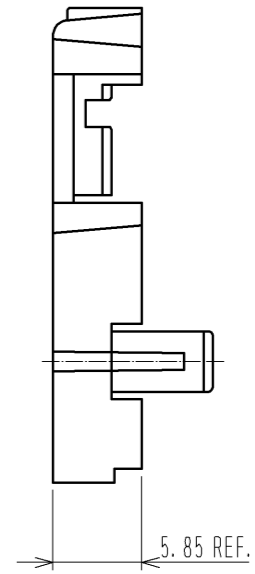
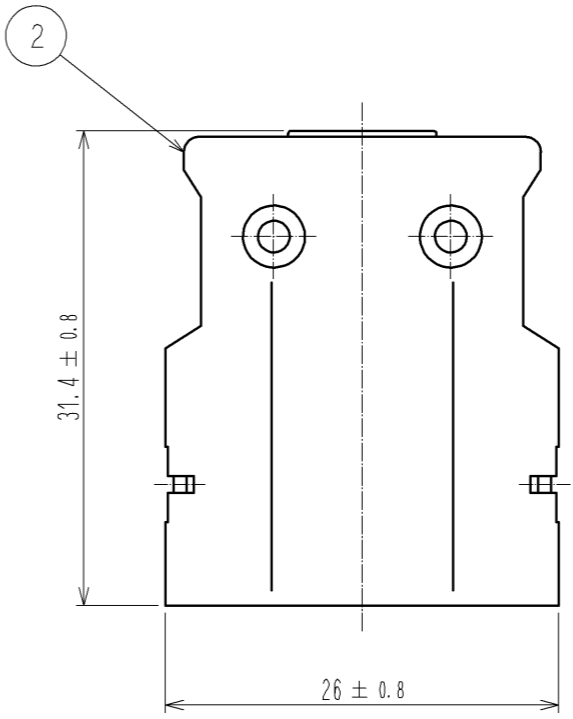
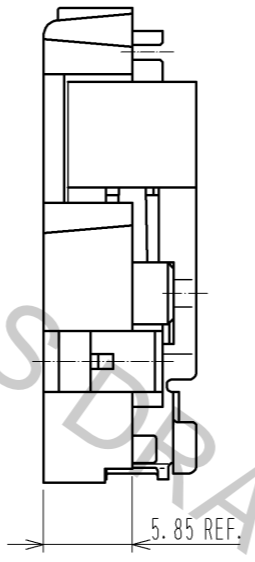
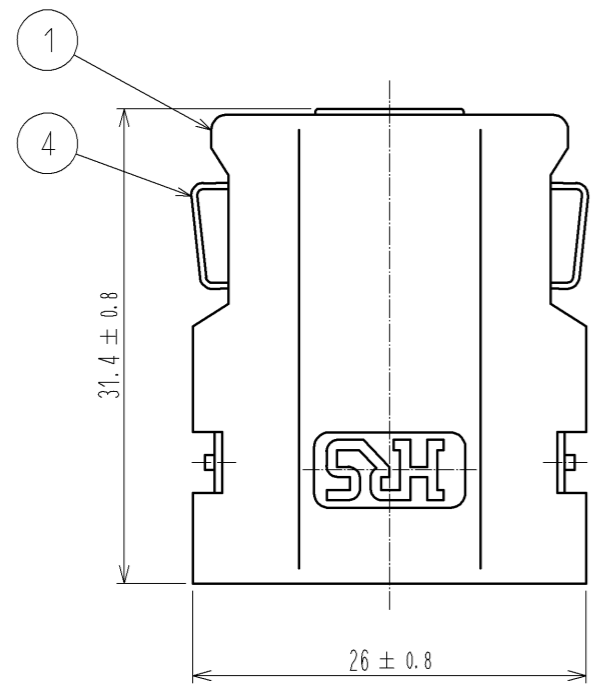


HRS DRAWING FOR REFERENCE



- NOTE 1 THIS PRODUCT IS DELIVERED SEPARATELY.
 2 AS SHOWN IN THE FIGURE, THIS PRODUCT SHALL BE USED ASSEMBLED TO A CONNECTOR UNIT 'DH3+B-17S'.
 A CLAMP 'DH-17-CMB(6.3)' IS NEEDED WHEN ASSEMBLING THE UNIT.
 3 A RECOMMENDED SCREW TIGHTENING FOR COVERS TO BE FROM 0.1 TO 0.15 N·m.

	2	PC	UL94V-0 BLACK	5	STEEL	TRIVALENT BLACK CHROMATE
	1			4	STAINLESS STEEL	
				3	STAINLESS STEEL	PLATING : NICKEL 0.1μm MIN.
NO.	MATERIAL	FINISH . REMARKS		NO.	MATERIAL	FINISH . REMARKS
UNITS		SCALE	COUNT	DESCRIPTION OF REVISIONS		DESIGNED
mm		2 : 1	2	DIS-E-003061		TM. ONO
		APPROVED : A0. SUZUKI	09. 04. 22	DRAWING NO.		EDC3-126852-00
HIROSE ELECTRIC CO., LTD.		CHECKED : KN. ICHIKAWA	09. 04. 22	PART NO.		DH-17-CT1B
		DESIGNED : MO. SHIMOYAMA	09. 04. 21	CODE NO.		CL244-0039-7-00
		DRAWN : MO. SHIMOYAMA	09. 04. 21			1/2



HRS	DRAWING NO.	EDC3-126852-00		2/2
	PART NO.	DH-17-CT1B		
	CODE NO.	CL244-0039-7-00		